

Result-based Payment

for Grassland Breeding Bird Habitats

„The Farmer Becomes A Bird-Farmer“



Heinrich Belting, Eberhard Masch, Kerrin Obracay

Photo: G. Heinze / NLWKN



What are grassland breeding birds?



Curlew



Lapwing



Redshank



Black-tailed Godwit



Common Snipe



Ruff

LIFE IP Conservation of grassland breeding bird habitats in the Atlantic region

LOCATION:

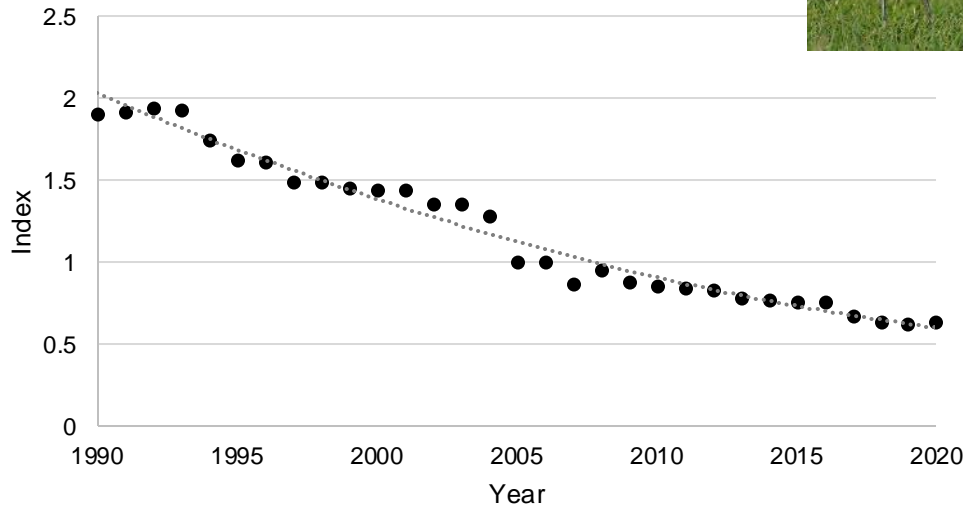
East Atlantic Flyway

DURATION:

11/2020–10/2030

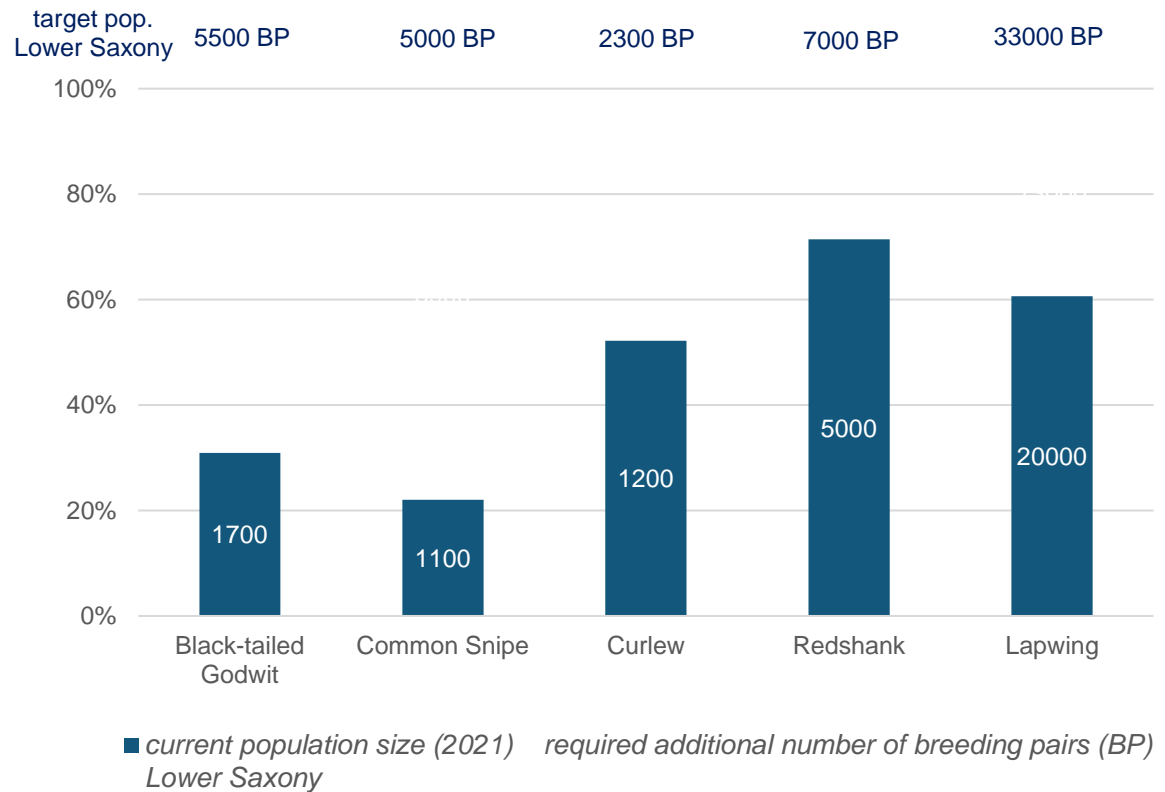


Breeding population in Germany



Favourable Conservation Status

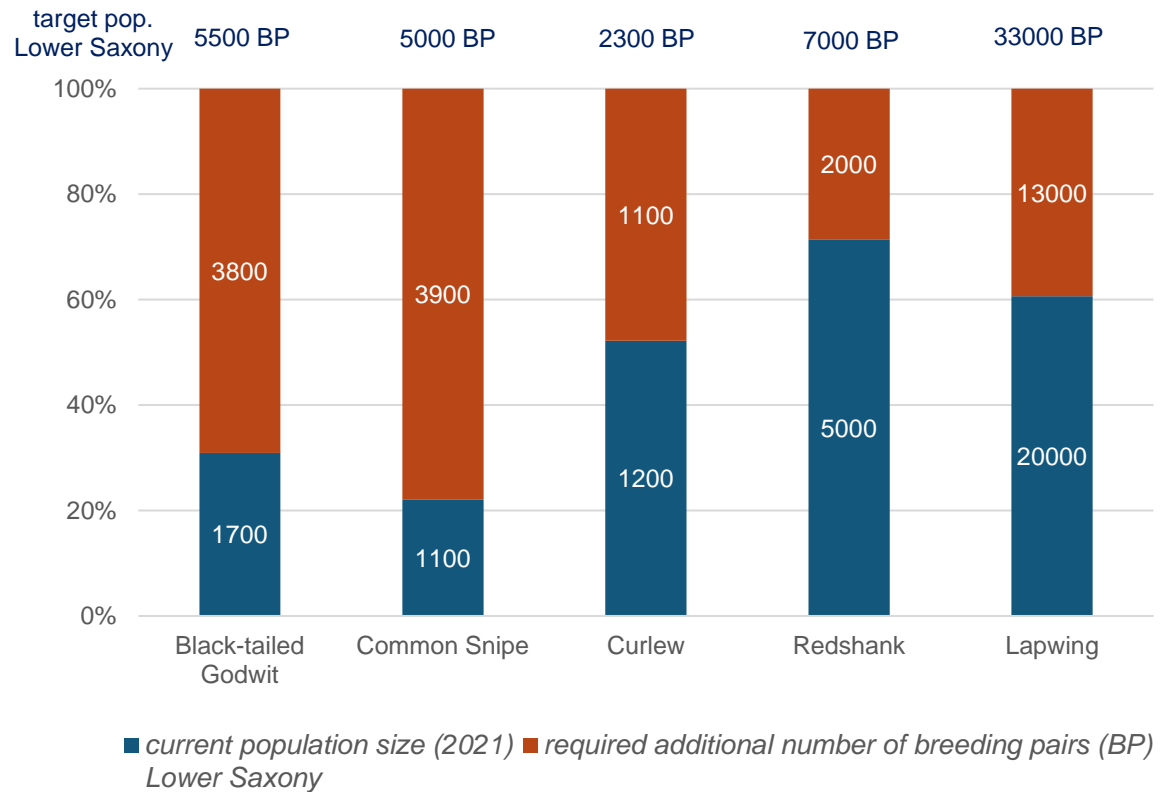
Objectives of meadow bird conservation - Objectives of the biodiversity strategy - Objectives of Natura2000



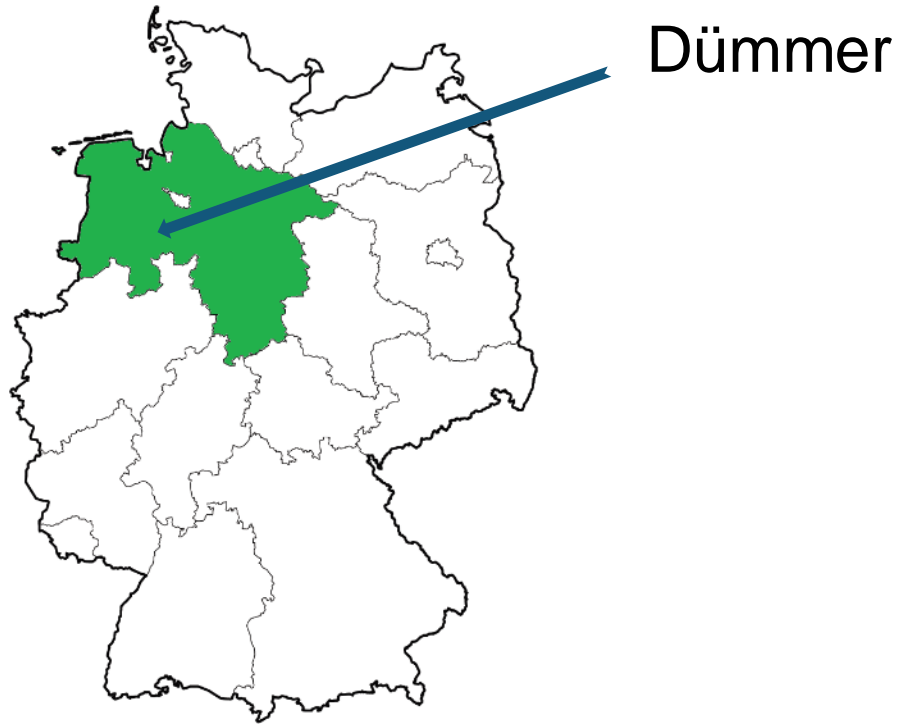
Favourable Conservation Status

Objectives of meadow bird conservation - Objectives of the biodiversity strategy - Objectives of Natura2000

➤ favourable conservation status obligatory



SPA Dümmer



LIFE IP
GrassBirdHabitats



university of
 groningen



provinsje fryslân
 provincie fryslân

Nationalpark
 Wattenmeer
 NIEDERSACHSEN



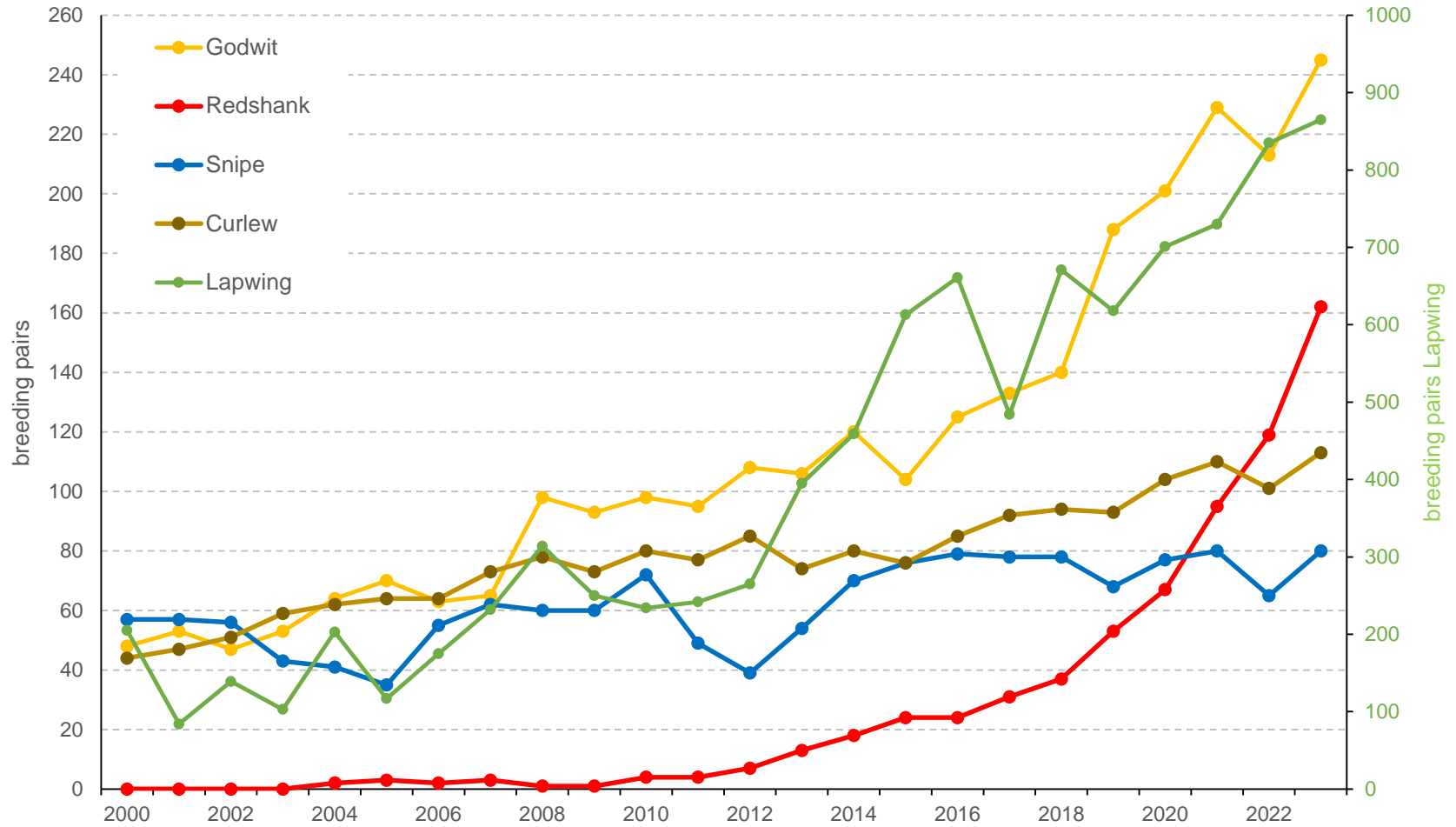
BIO
CONSUL os



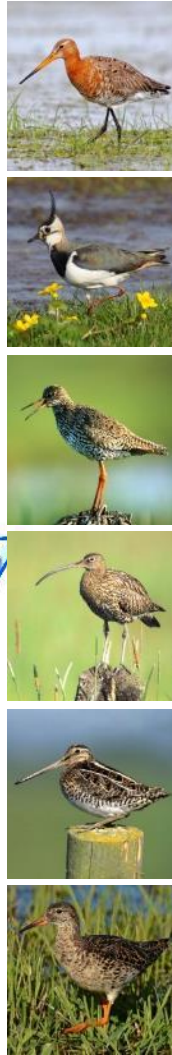
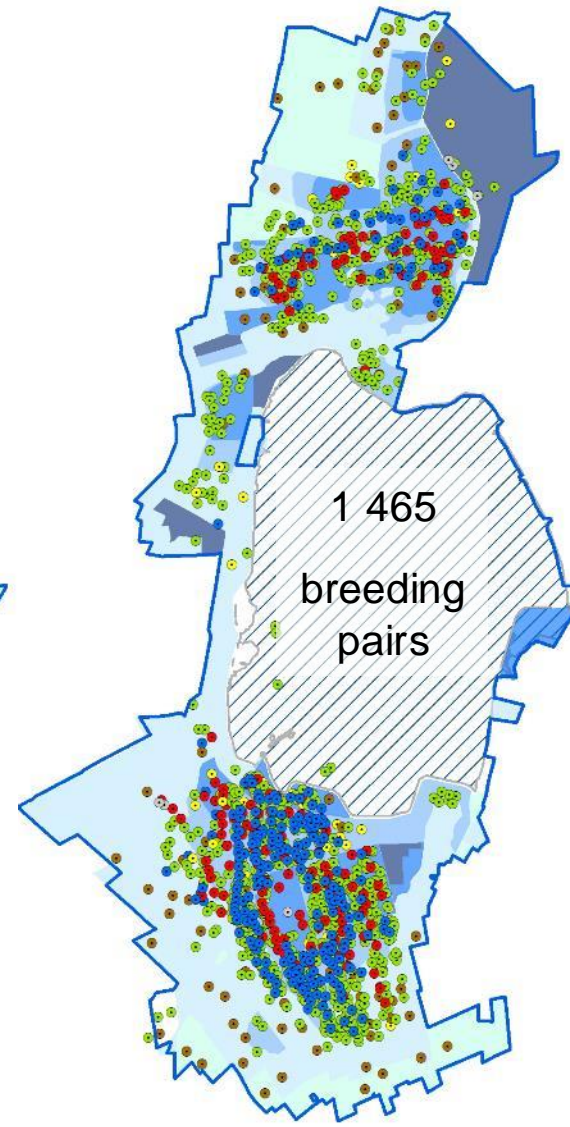
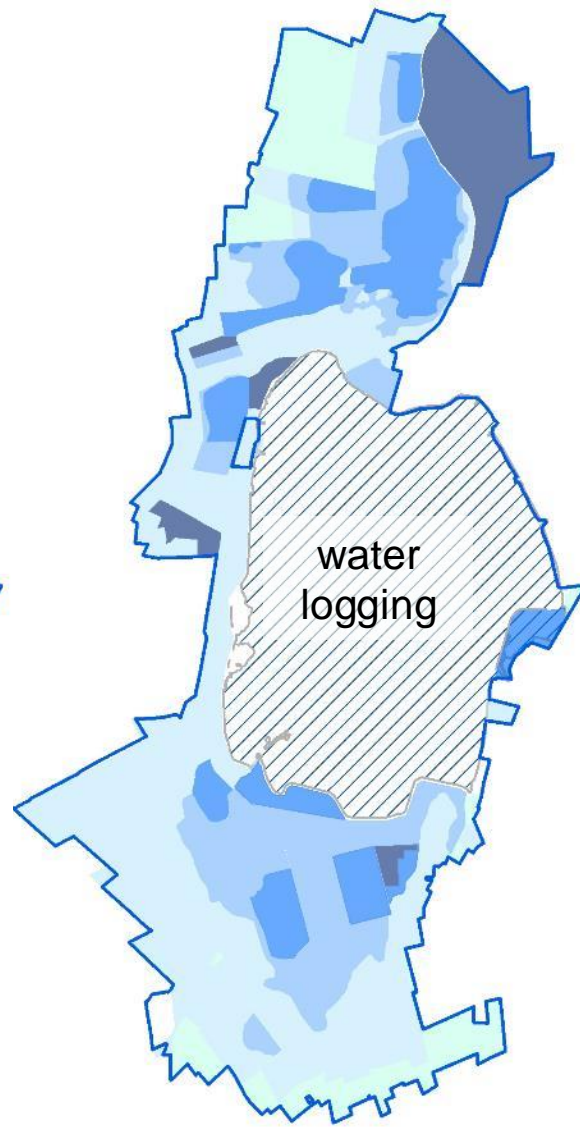
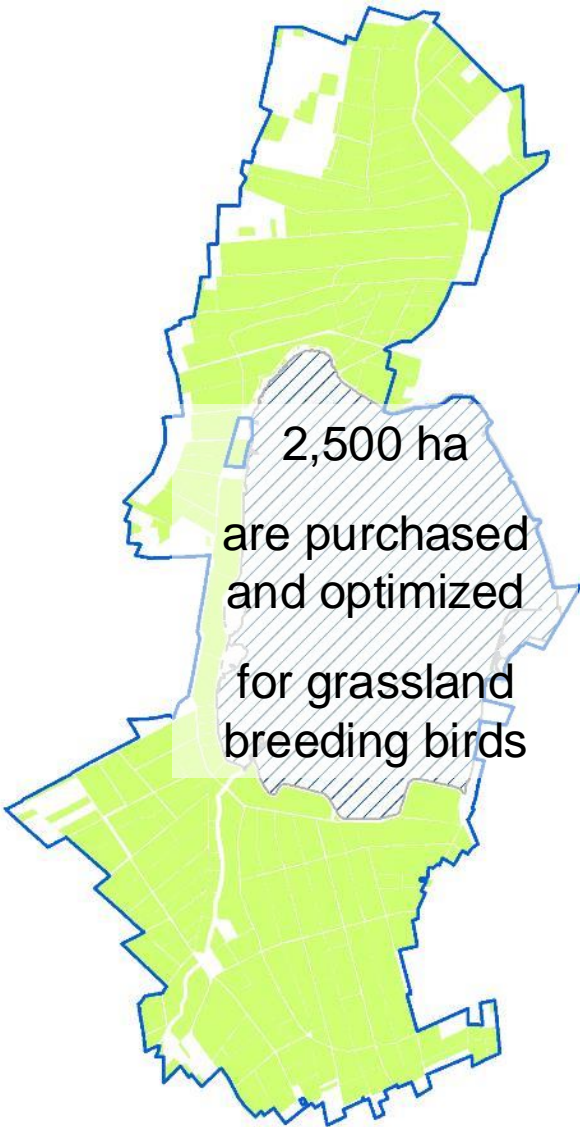
SPA Dümmer



All species have been increased



SPA Dümmer



LIFE IP
GrassBirdHabitats



university of
 groningen



provincje fryslân
 provincie fryslân

Nationalpark
 Wattenmeer
 NIEDERSACHSEN



Collectief
 Südwestkust
 voor beer en natuur

NLWKN

BIO
 CONSUL os



We know how successful meadow bird conservation works

Congruently determined by:

- Large areas of wet grassland
 - High openness, almost no vertical structures
 - Low disturbance
 - High watertables with temporarily flat-flooded sites
- Low or medium nutrient content of the soil
 - Mowing and grazing compliant to nesting distribution
 - Sufficient farming intensity for optimal vegetation structures
- High heterogeneity on landscape and parcel level
 - Moderate predation
 - Well organized guardianship and monitoring



All parameters need to be met

Meadow birds need...

everything, a farmer doesn't need

- Meadow bird-friendly management is not attractive for farmers



bad grass, bad hay - bad feed
but tons of work



LIFE IP
GrassBirdHabitats



university of
 groningen



provincje fryslân
 provincie fryslân

Nationalpark
 Wattenmeer
 NIEDERSACHSEN



BIO
CONSUL os



Necessity of payments

*Maintenance in autumn is time-consuming and expensive
= no interest*



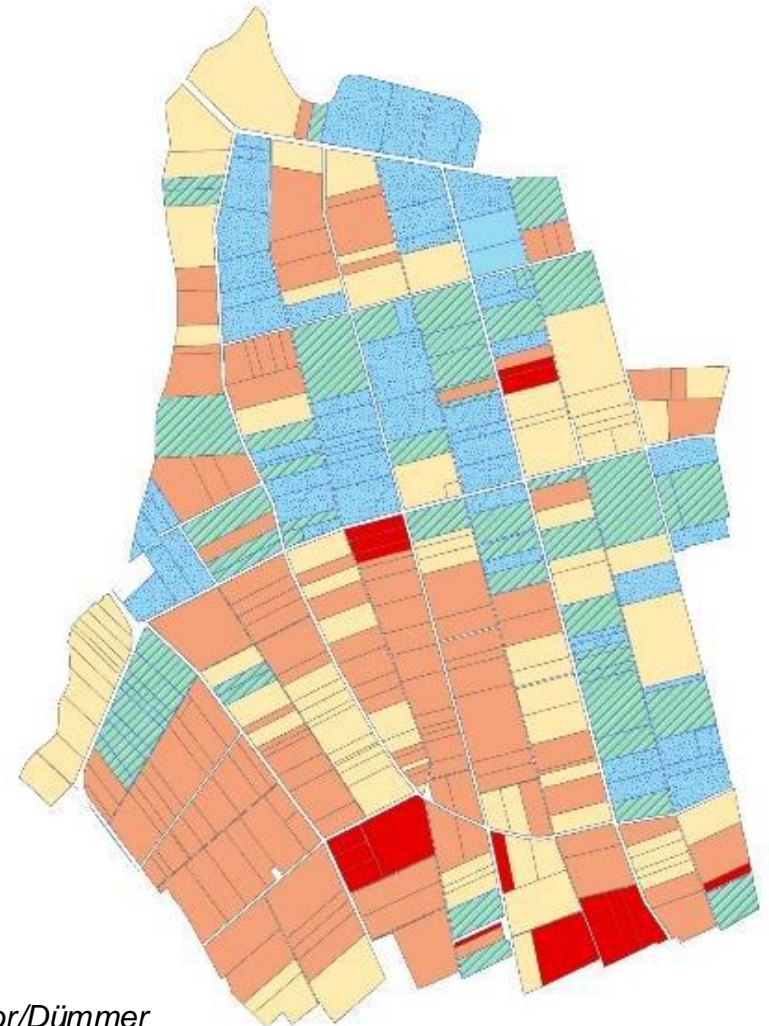
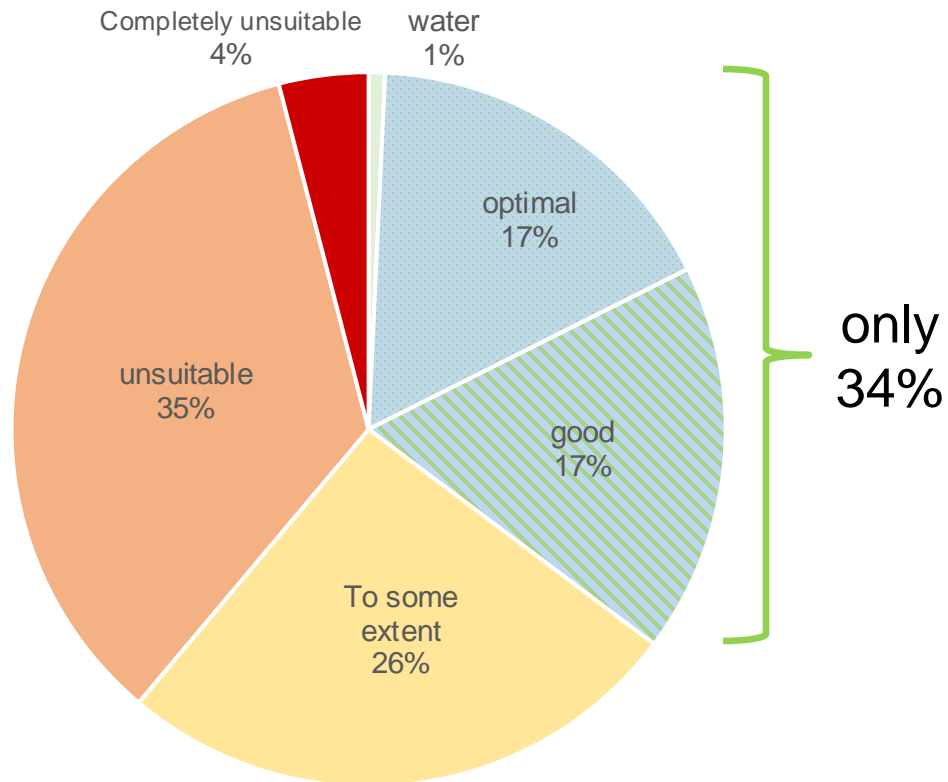
habitat quality declines

Securing the population is jeopardised



Situation at the Dümmer and in many other areas in Lower Saxony ...

Key factor „short vegetation“ → not yet sufficient



March 2023, Ochsenmoor/Dümmer

Necessity of payments

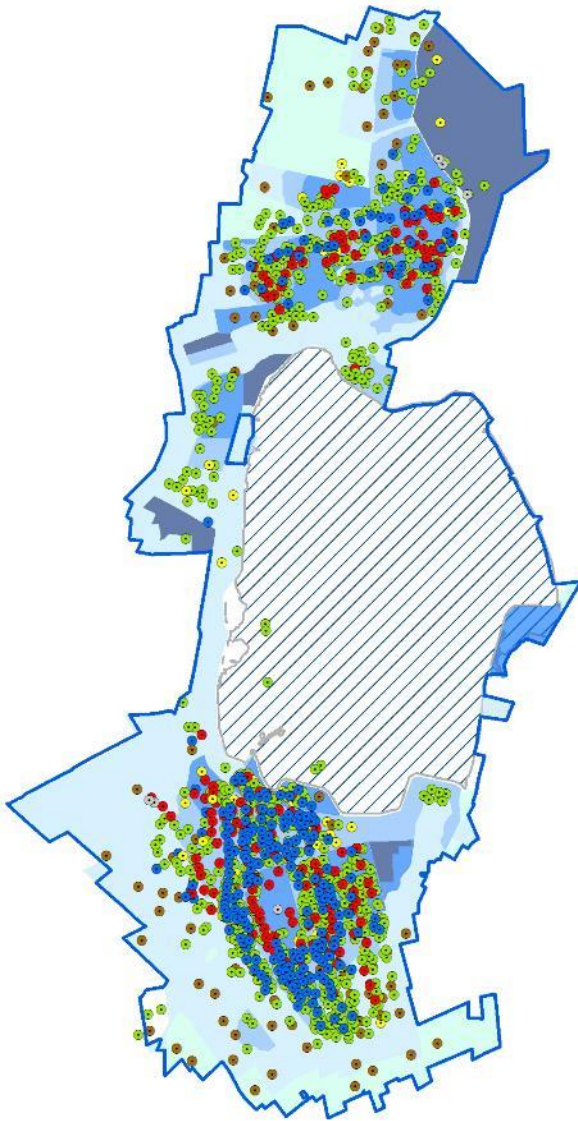
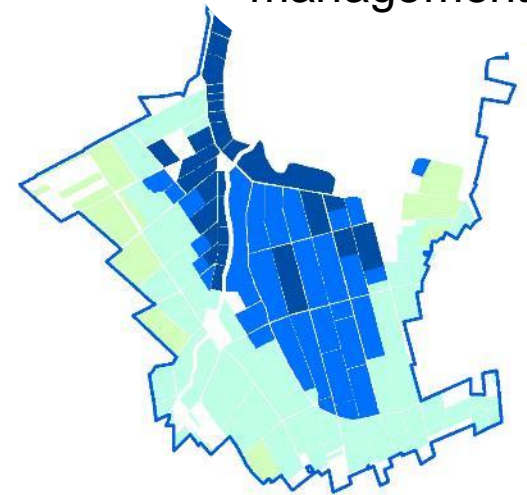
the wetter the more birds
the more expensive



Meadow bird-friendly
management
costs a lot of money



Difficulty of
management



„The Farmer Becomes A Bird-Farmer“

Development of a Result-based Payment



Survey and agronomic calculation

Prof. Dr. A. Mährlein



„The Farmer Becomes A Bird-Farmer“

The current harvest:

Harvest and benefit in future:



Result-based Payment: „The Farmer becomes a Bird-Farmer“

Management
deficits €/ha/a

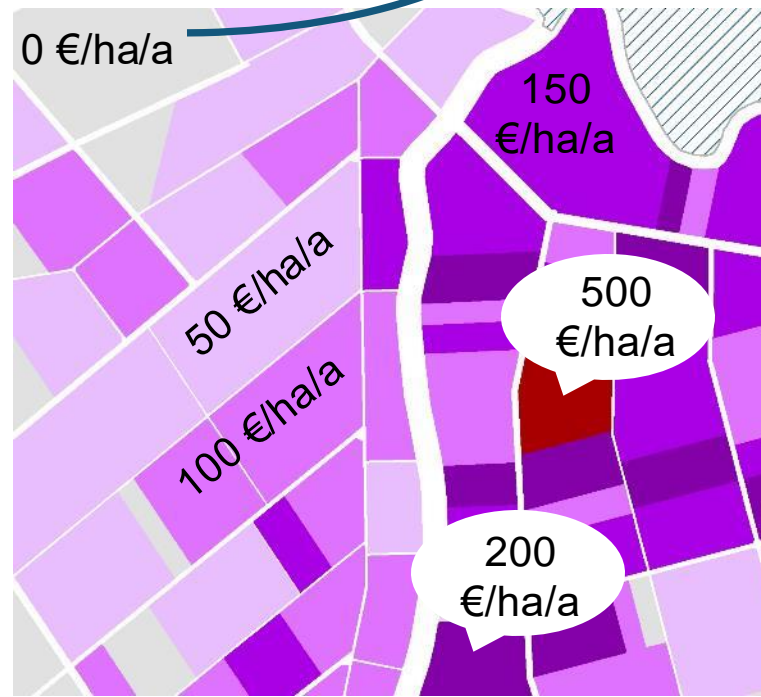
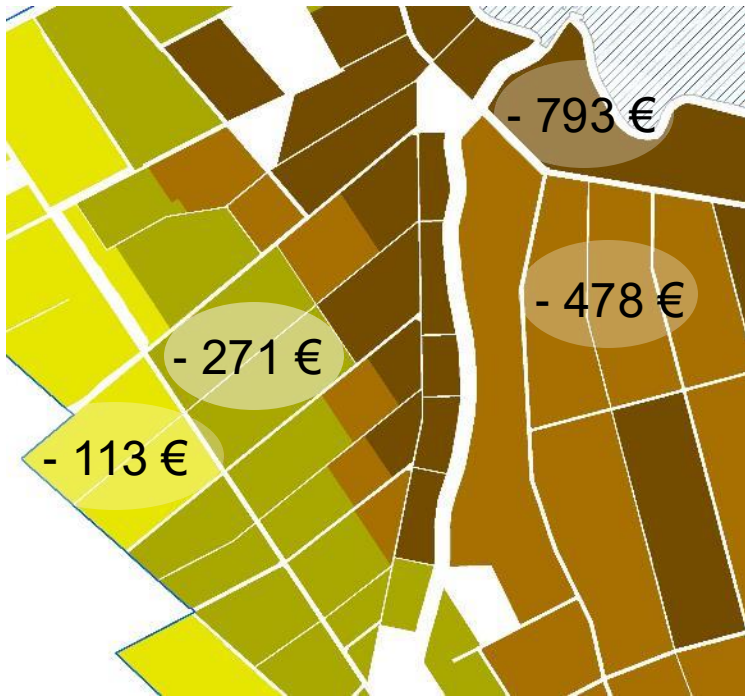
+

Meadow-Bird-Payment

*the more birds
the more money*

+

allocation
€/ha/a
parcels
without birds



LIFE IP
GrassBirdHabitats



university of
 groningen



provinsje fryslân
 provincie fryslân

Nationalpark
 Wattenmeer
 NIEDERSACHSEN



BIO
CONSUL os



Thresholds for any payments

Payments only:

- *Good habitat quality, perfect vegetation structure 20th Oct.*
- *less than 1.000 ex. soft rushes/ha*



And what do farmers say ?



Family Schmedt
180 ha + 200 ha Reserve

*We've always been waiting for something like this.
This is where we see our future*



Family Böckermann
23 ha + 76 ha Reserve

*My daughters will take over the farm.
The birds will benefit and so will we. A win-win situation.*

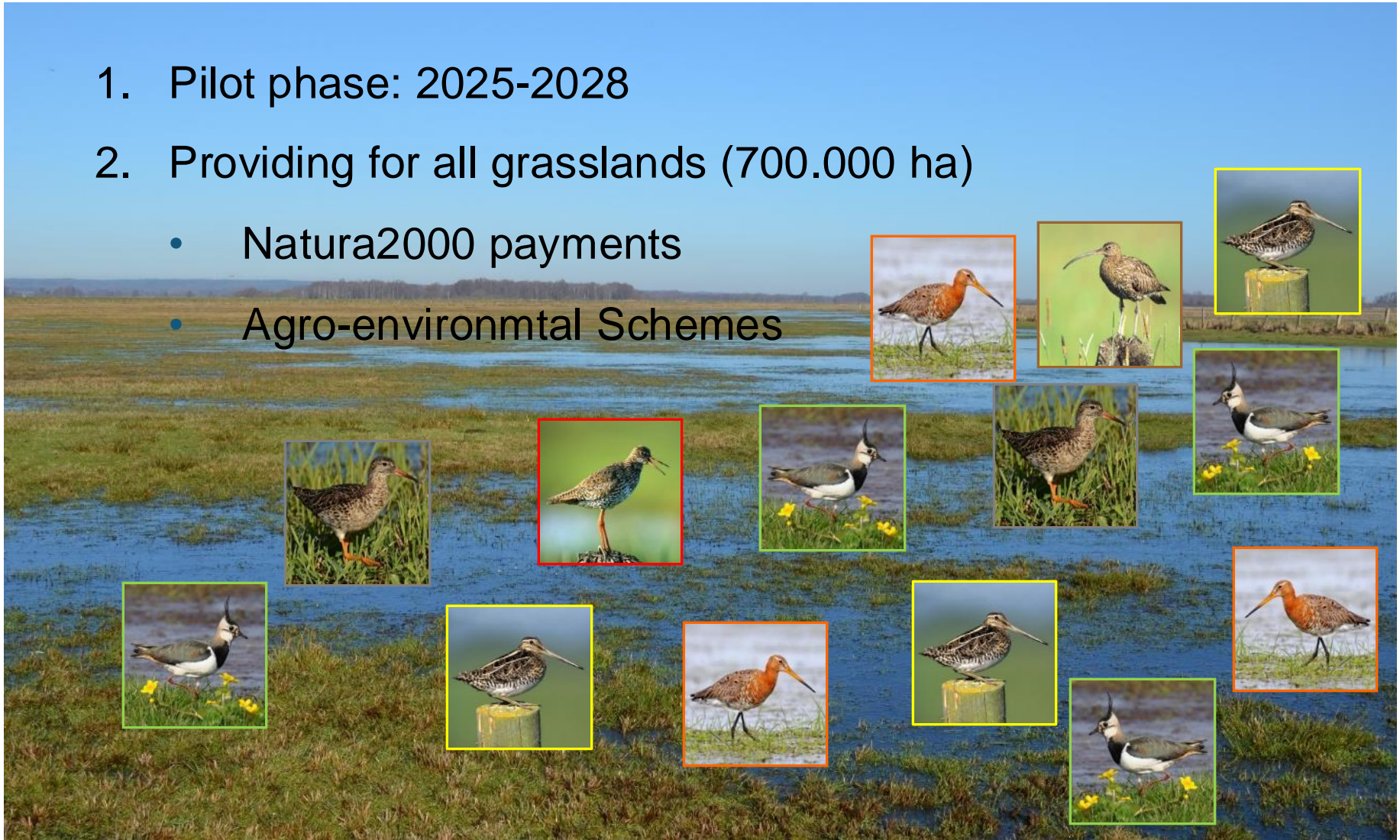


„Family“ Clausen
2 ha + 136 ha Reserve

I would like to expand my suckler cow herd in the protected area. I'm looking forward to the project.

The only future

1. Pilot phase: 2025-2028
2. Providing for all grasslands (700.000 ha)
 - Natura2000 payments
 - Agro-environmental Schemes





Thanks a lot for your kind attention!